



2193 Nolensville Pike, Nashville, TN 37211
Phone: (615) 254-1103 • (800) 854-6951 Fax: (615) 254-1104
order online www.dennisuniform.com
National Customer Service 800.854.6951

WELCOME TO DENNIS

We look forward to working with you this year! Since 1920, DENNIS has sewn the best uniforms available in our Portland, Oregon factory. We are a family-owned business committed to quality, customer service, and education. Our goal is to have every student in uniform by the first day of school. If you need any help, please do not hesitate to contact our National Customer Service Department 800.854.6951.

EASY WAYS TO SHOP

- ◆ Store, online, phone/fax/mail order.
- ◆ DENNIS accepts Visa, Mastercard, Discover & checks in US Dollars.
- ◆ Call National Customer Service for custom garments.

ORDER ONLINE

- ◆ www.dennisuniform.com
- ◆ Enter school code: **NVSHNT**

NATIONAL CUSTOMER SERVICE

800.854.6951 fax 877.291.5480
Hours: Monday-Friday 8am-5pm PST
Extended summer hours

EVENTS

In-Store Event at the Nashville Store:

Tuesday, June 28, 2011 from 4:30pm-6:30pm

RETURNS & EXCHANGES

DENNIS guarantees the quality of workmanship and fabrics on all garments.

Merchandise will be accepted for return or exchange within 60 days.

Merchandise must be accompanied by sales receipt, be unworn, unwashed, and unaltered, with tags intact.

There are no returns or exchanges on custom items.

Returns / exchanges / defective garments accepted at any branch store, or by mailing to:

DENNIS Uniform, 135 SE Hawthorne Blvd,
Portland, Oregon 97214

National Customer Service 800.854.6951

UNIFORM PRICING EFFECTIVE MAY 1, 2011

NASHVILLE STORE

phone 615.254.1103

fax 615.254.1104

REGULAR STORE HOURS

Tuesday, Wednesday & Friday

10am – 5pm

Thursday 10am – 6pm

Saturday 10am – 2pm

EXTENDED SUMMER HOURS

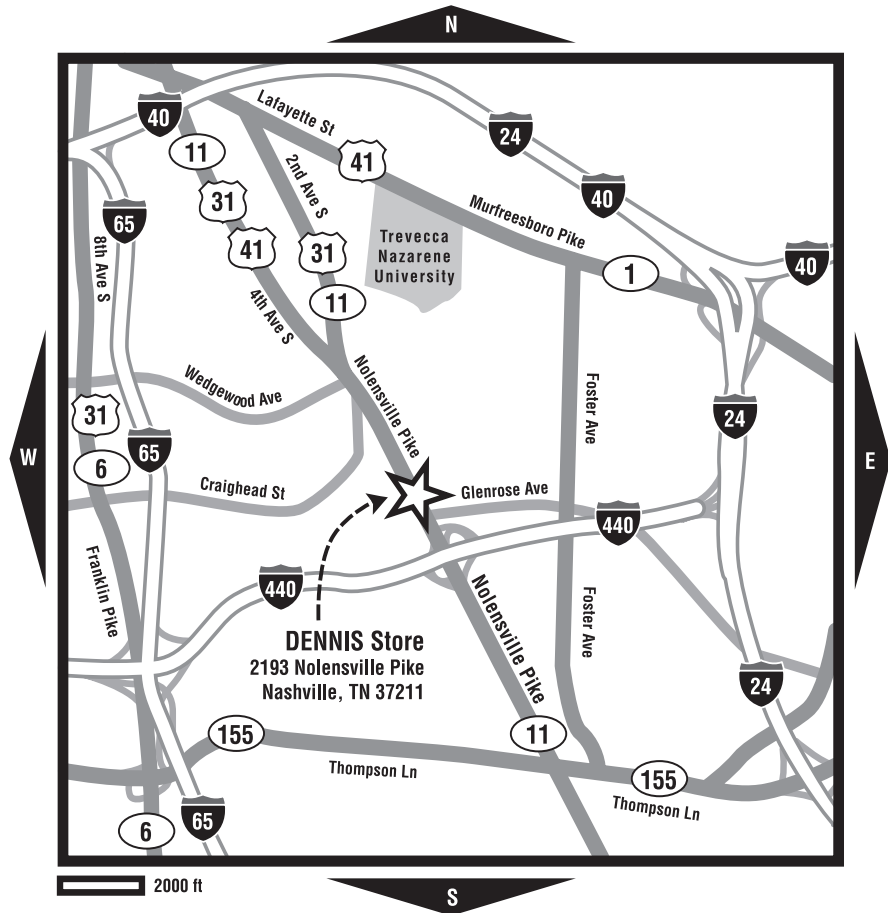
July 25-August 20

Monday-Friday 10am – 6pm

Saturday 10am – 2pm

DIRECTIONS

From I-440, take Exit 6 at Nolensville Pike. Turn north on Nolensville (towards downtown Nashville). DENNIS is approximately 2 blocks north on the left. Look for the new brick building and the black DENNIS sign.



DENNIScrip, Gift Scrip & AFP Vouchers

- DENNIScrip may be used at DENNIS locations, in-school sale events, and mail order. Excludes online and phone.
- Maximum change made is \$5.
- DENNIScrip is not returnable or refundable for dollars
- DENNIScrip is good forever!

DENNIS PROMOTIONS CALENDAR for 2011 and 2012

January · New Year's Savings*

10% savings on all purchases & orders. . . phone, mail, internet and in-store.

June 10-July 10 · Early Bird Savings*

10% savings on all purchases & orders. . . phone, mail, internet and in-store.

SPECIAL IN-STORE ONLY SAVINGS for 2011 and 2012

October through May · DENNIS Advantage Card Savings

Earn fifteen \$10 stamps on your DENNIS advantage card and save \$10 on your next in-store purchase.

March · Double Punch Month

Earn 2 stamps for every \$10 purchase on your DENNIS Advantage Card. Watch for our emails announcing DENNIS specials!

*excludes marked down items

ST. HENRY SCHOOL

School Code: NVSHNT

6401 Harding Road; Nashville, TN 37205

Girls, grades: K-5 JUMPERS



Girls 3-20	\$43.75
Girls 6½-16½	\$44.75
Girls 18½-20½	\$44.75

Item #: 08811B-903

Tyler Plaid-Split front, knife pleats (583)

May be worn all year. Required Winter Uniform beginning on Oct 10, 2011 - Holy Thursday. Worn with SS/LS Peter Pan blouse

Girls, grades: 6-8 SKIRTS



Teens 2-20	\$37.50
Teens 2½-20½	\$40.00

Item #: 001340-903

DD Plaid (RP plaid 57) (255)

While supplies last. May be worn all year. Required Winter Uniform Oct.10 - Holy Thursday. Worn with navy polo shirts with logo.

Girls, grades: 6-8 SKIRTS



Girls 3-20	\$41.50
Girls 6½-16½	\$42.50
Girls 18½-20½	\$42.50
Juniors 1-19	\$43.50
Juniors 21-25	\$43.50

Item #: 008680-903

Tyler Plaid-Center box pleat (583)

May be worn all year. Required Winter Uniform Oct.10 - Holy Thursday. Worn with navy polo shirts with logo

Girls, grades: PK SKORTS



Girls 2-3-4-5-6-7-8	\$20.50
---------------------	---------

Item #: 035180-965

Pull On Skort-Khaki Twill - No Tabs (068)

PK girls may be worn all year with SS/LS navy polo shirts with logo.

Girls, grades: K-8 SKORTS



Girls 3-6X	\$21.75
Girls 7-18	\$21.75
Girls 6½-18½	\$25.75
Juniors 3-19	\$26.75
Juniors 21-25	\$26.75

Item #: 039230-900

Wrap Around Skort-Khaki (RP 4) (049)

Summer Uniform: August - Oct. 9 & April 10 - end of school year. Worn with navy SS/LS polo shirts with logo

Girls, grades: K-5 BLOUSES



Youth 2-16	\$15.00
Adult S-3XL	\$17.00

Item #: 00080A-911

White BC S/S-Peter Pan Collar (119)

Worn with Jumper

Girls, grades: K-5 BLOUSES

Youth 2-16	\$17.00
Adult S-3XL	\$19.00

Item #: 00080C-911

White BC L/S-Peter Pan Collar (119)

Worn with jumper

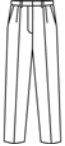
Girls, grades: 6-8 POLO

Youth 2XS-XL	\$20.00
Adult S-3XL	\$22.00

Item #: 05738C-KSN

Navy Pique L/S w/St. Henry flock (067)

May be worn all year

Girls, grades: PK PANTS

Reg 3-6X or Slim 3-6	\$22.75
Reg 7-20 or Slim 7-16	\$24.75
Girls 6½-16½	\$24.75

Item #: 040400-965

Girls Khaki Twill-Plt Frt (068)

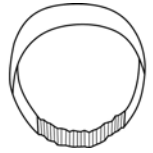
Girls, grades: K-8 WALK SHORTS

Girls 3-6X	\$18.50
Girls 7-20	\$21.00
Slim 7-16	\$21.00
Girls 6½-16½	\$22.00
Juniors 1-19	\$25.50

Item #: 040500-965

Girls Khaki Twill 60C/40P-Plt Frt (068)

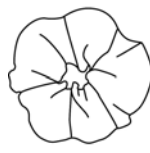
Summer Uniform: August - Oct. 9 & April 10 - end of school year. Worn with navy SS/LS polo shirts with logo

Girls, grades: K-8 ACCESSORIES

One size	\$8.00
----------	--------

Item #: 004680-903

Elastic Back Headband-DD Plaid (RP plaid 57) (255)

Girls, grades: K-8 ACCESSORIES

One size	\$6.00
----------	--------

Item #: 005090-903

Scrunchy-DD Plaid (RP plaid 57) (255)

Girls, grades: K-8 ACCESSORIES

Youth XS-XL	\$10.50
Adult S-XL	\$14.50

Item #: 035340-909

Bike Shorts-Black (007)

Bike Shorts-Dk Navy (025)

Girls, grades: K-8 ACCESSORIES

Sizes S-M-L-XL	\$3.75
----------------	--------

Item #: 047100-900

Crew Socks Cotton-White (119)

Girls, grades: K-8 ACCESSORIES

Sizes S-M-L-XL

\$4.00

Item #: 047300-900

Knee-Hi Cable Knit-Navy (067)

Knee-Hi Cable Knit-White (119)

Girls, grades: K-8 ACCESSORIES

Sizes XS-XL

\$9.00

Adult Average-Tall

\$10.00

Item #: 047550-900

Tights Heavy Weight Ribbed-Black (007)

Tights Heavy Weight Ribbed-Navy (067)

While Supplies Last - All Sales Final

Girls, grades: K-8 ACCESSORIES

Sizes XS-XL

\$4.75

Adult Average-Tall

\$5.75

Item #: 047600-900

Tights Lycra Opaque-Black (007)

Tights Lycra Opaque-Navy (067)

While Supplies Last - All Sales Final

Girls, grades: K-8 ACCESSORIES

Sizes XS-XL

\$9.00

Item #: 047800-900

Tights Heavy Weight Ribbed-Black (007)

Tights Heavy Weight Ribbed-Navy (067)

Girls, grades: K-8 ACCESSORIES

Sizes XS-XL

\$5.00

Item #: 047900-900

Tights Heavy Weight Opaque-Black (007)

Tights Heavy Weight Opaque-Navy (067)

Girls, grades: K-8 ACCESSORIES

Adult Average-Tall

\$6.00

Item #: 047950-900

Tights Microfiber Opaque-Black (007)

Tights Microfiber Opaque-Navy (067)

Girls, grades: K-8 ACCESSORIES

One size

\$6.00

Item #: 0FB13B-903

Rosette Barrette-DD Plaid (RP 57) (255)

Girls, grades: K-8 ACCESSORIES

One size

\$6.00

Item #: 0FB13E-903

Rosette Elastic-DD Plaid (RP 57) (255)

Girls, grades: K-8 ACCESSORIES

One size

\$6.00

Item #: 0FB21B-903

3 Button Bow Barrette-DD Plaid (RP 57) (255)

Girls, grades: K-8 ACCESSORIES

One size

\$8.00

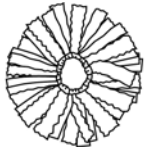
Item #: 0FB240-903

Double Rosette Barrette-DD Plaid (RP 57) (255)

Girls, grades: K-8 ACCESSORIES

One size \$7.00

Item #: 0FB260-903
Wide Padded Headband-DD Plaid (RP 57) (255)

Girls, grades: K-8 ACCESSORIES

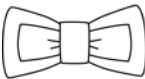
One size \$8.00

Item #: 0FB400-903
Pom Pom Scrunchy-DD Plaid (RP 57) (255)

Girls, grades: K-8 ACCESSORIES

One size \$6.00

Item #: 0FB48M-903
Mini Ribbon Burst Barrette-DD Plaid (RP 57) (255)

Girls, grades: K-8 ACCESSORIES

One size \$5.00

Item #: 0FB9B0-903
Flat Bow Barrette-DD Plaid (RP 57) (255)

Girls, grades: 1-8 FEMALE SHOES

Youth 8½-12 \$55.00
Youth 12½-4 \$55.00
Adult 6-11 \$62.00

Item #: 00366M-900
Female saddle shoes med width-Black/White (843)
Optional; Sold in store only

Girls, grades: K-8 ACCESSORIES

One size \$8.00

Item #: 0FB29E-903
Lg Streamer Bow-DD Plaid (RP 57) (255)

Girls, grades: K-8 ACCESSORIES

One size \$8.00

Item #: 0FB48L-903
Ribbon Burst Barrette-DD Plaid (RP 57) (255)

Girls, grades: K-8 ACCESSORIES

One size \$6.00

Item #: 0FB800-903
Narrow Headband-DD Plaid (RP 57) (255)

Girls, grades: K-8 ACCESSORIES

One size \$5.00

Item #: 0FB9E0-903
Flat Bow Elastic-DD Plaid (RP 57) (255)

Girls & Boys, grades: PK-8 POLO

Youth 2XS-XL \$18.00
Adult S-3XL \$20.00

Item #: 05738A-KSN
Navy Pique S/S w/St. Henry flock (067)
K-5 girls, Summer Uniform: August - Oct. 9 & April 10 - end of school year. 6-8th girls & K-8 boys may wear all year.

Girls & Boys, grades: PK PANTS

Toddler 2-4	\$16.50
Youth XS-M	\$16.50

Item #: 044120-965
Pull on-Khaki Twill (068)

Girls & Boys, grades: PK PULL ON SHORT

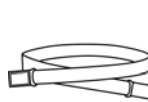
Toddler 3-4	\$14.50
Youth XS-M	\$14.50

Item #: 035290-965
Pull On Short-Khaki Twill (068)
May be worn all year

Girls & Boys, grades: PK-8 SWEATSHIRT 9oz

Youth 3XS-XL	\$19.50
Adult S-3XL	\$22.50

Item #: 090000-KSN
Navy Crew Neck w/St. Henry flock (067)
May be worn in the classroom

Girls & Boys, grades: K-1 ACCESSORIES

One size	\$6.00
----------	--------

Item #: 014150-900
Belt Stretch w/Magnetic Closure-Khaki (049)

Girls & Boys, grades: K-8 ACCESSORIES

Sizes S-M-L-XL	\$3.75
----------------	--------

Item #: 047100-900
Crew Socks Cotton-Navy (067)

Girls & Boys, grades: K-8 ACCESSORIES

One size	\$4.25
----------	--------

Item #: MK2015-900
Iron on Labels w/Marker (000)

Girls & Boys, grades: 1-8 ACCESSORIES

Sizes 20-30	\$15.50
Sizes 32-48	\$16.50

Item #: 041500-900
Belt Braided Leather-Brown (013)

Girls & Boys, grades: PK-8 UNISEX SHOES

Youth 8½-13½	\$39.00
Youth 1-7	\$39.00
Adult 7½-13	\$54.00

Item #: 00680M-900
Unisex buck suede shoes-med width-Tan (133)
Optional; Sold in store only

Boys, grades: PK-8 POLO

Youth 2XS-XL	\$20.00
Adult S-3XL	\$22.00

Item #: 05738C-KSN
Navy Pique L/S w/St. Henry flock (067)
Optional all year for boys and tucked in

Boys, grades: 6-8 SHIRTS

Youth 4-20	\$18.00
Adult S-3XL	\$21.50

Item #: 02900A-950
White Oxfordcloth-S/S (119)

Boys, grades: 6-8 SHIRTS

Youth 4-20	\$19.00
Adult S-3XL	\$23.00

Item #: 02900C-950
White Oxfordcloth-L/S (119)

Boys, grades: PK-8 PANTS

Reg 3-7 or Slim 3-7	\$21.00
Reg 8-16 or Slim 8-16	\$24.50
Husky 25-38	\$29.00
Prep 26-32	\$28.00
Mens 33-44	\$30.00

Item #: 070000-964
Boys Khaki Rassler Twill-Plt Frt-DENNIS Durables (049)

PK-8 boys: Req. winter uniform Oct. 10 - Holy Thursday & worn with navy SS/LS polo's, may be worn all year. Optional, 6-8th boys white oxford shirts.

Boys, grades: PK-8 PANTS

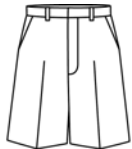
Reg 3-7 or Slim 3-7	\$24.50
Reg 8-16 or Slim 8-16	\$28.50
Husky 25-38	\$33.00
Prep 27-32	\$30.00
Mens 33-48	\$34.00

Item #: 075500-964
Boys Khaki Twill-Rlxd Fit 65P/35C-Flat Frt (049)
PK-8 boys: Req. winter uniform Oct. 10 - Holy Thursday & worn with navy SS/LS polo's, may be worn all year. Optional, 6-8th boys may wear white oxford shirts

Boys, grades: K-8 WALK SHORTS

Reg 3-7 or Slim 3-7	\$19.00
Reg 8-16 or Slim 8-16	\$22.50
Husky 26-38	\$26.50
Prep 26-32	\$26.50
Mens 33-44	\$27.00

Item #: 040600-964
Boys Khaki Rassler Twill Pltd Frt (049)
Summer Uniform: August - Oct. 9 & April 10 - end of school year. Worn with navy SS/LS polo shirts with logo

Boys, grades: K-8 WALK SHORTS

Reg 3-7 or Slim 3-7	\$19.50
Reg 8-16 or Slim 8-16	\$22.50
Husky 26-38	\$26.50
Prep 27-32	\$26.50
Mens 33-48	\$27.00

Item #: 040620-964
Boys Khaki Twill Flat Front (049)
Summer Uniform: August - Oct. 9 & April 10 - end of school year. Worn with navy SS/LS polo shirts with logo

Principal notes: 2011/2012 school year.

Summer Uniform: August - October 9, April 10 - end of school year.

Winter Uniform: October 10 - Holy Thursday

EVENTS

In-Store Event at the Nashville Store:

Tuesday, June 28, 2011 from 4:30pm-6:30pm

30-Mar-11

School Code: NVSHNT

0.0925

Girls' Jumpers, Skirts & Skorts, Pants & Walk shorts

students' body measurements

size	chest	waist	hip	skirt length	length by style				
					3521 skort length*	ankle-length skirt	walk shorts length	4040 pants inseam	4030 flat-front pants inseam
G3	23	21	24	11	10.25	—	10.25	15.25	19.25
G4	24	22	25	12	10.75	—	11	16.75	20.25
G5	24.5	22.5	26	13	11.5	—	11.75	18.5	21.25
G6	25	23	26.5	14	12	—	12.5	20.25	22.25
G6x		23.5	27		12.75	—	13.25	22	23.25
G7	26	23.5	27.5	15	14.75	28.5	14	24	24
G8	27	24	28.5	16	15.25	29.5	14.75	25.5	25.5
G10	29	25	30.5	17	15.75	30.5	15.5	26.5	27.75
G12	30.5	26	33	18	16.5	31.5	16.5	27	28.25
G14	32	27	35	19	17	32.5	17.5	27.75	29
G16	34	28	37	20	17.75	33.5	18.25	28	29.25
G18	36	29	39	20	18.5	33.5	19	28	29.25
G20	38	30	41	20	18.75	33.5	19.25	28	29.25
Half (plus) sizes									
H6.5	27	25	28.5	14	12.75	—	12.5	20.25	—
H8.5	29	26	30.5	16	15.25	—	14.75	25.5	—
H10.5	31	27	32.5	17	15.75	—	15.5	26.5	—
H12.5	32.5	28	35	18	16.5	—	16.5	27	—
H14.5	34	29	37	19	17	—	17.5	27.75	—
H16.5	36	30	39	20	17.75	—	18.25	28	—

*3550 longer skort measures 3" longer

Girls' Pleat-front Pants (#4040) are available in slim sizes. Slim sizes run 2" smaller in waist and hips than regular sizes and are available in sizes S4, S5, S6, S7, S8, S10, S12, S14, S16.

Junior Skirts & Skorts

students' body measurements length by style

junior size	waist	hip	skirt length	length by style				
				3521 skort length*	ankle-length skirt	walk shorts length	4040 pants inseam	4030 flat-front pants inseam
J1	25	35.5	19	17.5	35	16.25	30.75	32.25
J3	26	36.5	19	17.75	35	16.5	30.75	32.25
J5	27	37.5	19	18	35	16.75	31	32.5
J7	28	38.5	20	18.25	35	17	31.25	32.5
J9	29	39.5	20	18.5	35	17.25	31.25	32.75
J11	30	40.5	20	18.75	35	17.5	31.25	32.75
J13	31.5	42	20	19	35	17.75	31.25	32.75
J15	33	43.5	21	19.25	35	18	31.5	33
J17	34.5	45	21	19.5	35	18.25	31.5	33
J19	36	46.5	21	19.75	35	18.5	31.75	33.25

*3550 longer skort measures 3" longer

Socks

sock size	shoe size
S	youth 7-10.5
M	youth 10.5-adult 3
L	adult 4-8
XL	adult 10-13

Youth Cable Tights

youth size	height	weight
S	41-49"	42-56#
M	49-56"	50-80#
L	52-60"	70-105#

Youth Nylon Tights

youth size	height	weight
XS	36-40"	35-50#
S	41-46"	50-65#
M	46-50"	65-80#
L	51-55"	80-96#
XL	56-60"	96-105#

Junior Nylon Tights

junior size	height	weight
S/M	5'-5'4"	85-120#
M/Tall	5'4"-5'8"	115-140#

Girls' Blouses*

size	blouse chest	butterfly/camp shirt chest only	wing collar blouse
G3	22	23	—
G4	23	24	—
G5	—	24.5	—
G6	24	25	—
G6x	—	25.5	—
G7	—	26	—
G8	25	27	—
G10	27	29	29
G12	29	30.5	30.5
G14	31	32	32
G16	33	34	34

* order the same size as jumper or skirt

Juniors' & Women's Blouses

junior size	camp shirt/wing collar blouse chest	women's size	chest blouse
J1	34	S	30-32
J3	35	M	34-36
J5	36	L	38-40
J7	37	XL	42-44
J9	38	2XL	46-48
J11	39	3XL	50-52
J13	40.5		
J15	42		
J17	43.5		
J19	45		

Girls' Polo Shirt*

size	chest	length of garment
2XS	22	16
XS	24	17
S	26	18
M	27	19.5
L	29	21
XL	31	22

Juniors' Polo Shirt*

size	chest	length
XS	35	23.5
S	37	24.5
M	39	25
L	41	26
XL	44	26.5
2XL	47	27

*garment is styled to have a trim fit

Boys' Pants & Walk shorts*

boys' size	waist	short length	pant inseam
3	21.5	12	14.5
4 slim	20	—	16
4	22	12.5	16
5 slim	20.5	—	17.5
5	22.5	13	17.5
6 slim	21	—	19.5
6	23	13.5	19.5
7 slim	21.5	—	20
7	23.5	14	20
8 slim	22	—	21.5
8	24	15	21.5
9 slim	22.5	—	23
9	24.5	—	23**
10 slim	23	—	24
10	25	16.5	24
11 slim	23.5	—	25**
11	25.5	—	25
12 slim	24	—	26.5
12	26	17.25	26.5
14 slim	25	—	28
14	27	17.75	28
16 slim	26	—	29.5
16	28	17.25	29.5

* sizes 4-10 have elastic in back waistband

** sizes 9 & 11 not available in 7900 & walkshorts

Husky/Prep Pants & Walk shorts

waist size	husky shorts* length	prep shorts length	husky pants inseam	prep pants inseam
26	14.25	19**	21.5	—
27	15.75	19	22.5	32
28	16.25	19.25	24	32
29	16.75	19.5	25.5	32
30	17.25	19.75	27	32
31	17.75	20	27.5	32
32	18.25	20.25	28.5	32
33***	18.75	20.5	29.5	36
34	19.25	20.75	29.5	36
36	19.75	21.25	30.5	36
38	—	21.75	31.5	36
40	—	22.25	—	36
42	—	22.5	—	36
44	—	22.75	—	36

* husky sizes have elastic in waistband

** twill walk shorts only

*** waist size 33" and up are 36" unhemmed

T-Shirts, Jackets & Sweatshirts

youth size	t-shirts garment size	jackets/sweatshirts garment size
XS	N/A	2-4
S	6-8	6-8
M	10-12	10-12
L	14-16	14-16
XL	N/A	18-20

adult size	garment size
S	34-36
M	38-40
L	42-44
XL	46-48

Gym Shorts & Sweatpants

youth size	gym shorts waist	sweatpants waist
S	21-22	22-24
M	23-24	24-26
L	25-26	26-28

adult size	gym shorts waist	sweatpants waist
XS	24-26	N/A
S	28-30	30-32
M	32-34	34-36
L	36-38	38-40
XL	40-42	42-44

Pull-on Pants & Shorts

youth size	waist	pants inseam
2XS	21-22	16
XS	22-23	19
S	23-24	22
M	25-26	25
L	27-28	27
XL	29-30	28

adult size	waist	pants inseam
XS	25-27	31.5
S	28-30	32
M	31-33	32.5
L	34-36	33
XL	37-39	33.5
2XL	40-42	34

Shirts

youth size	chest
4	22
6	24
8	26
10	28
12	30
14	32
16	34
18	36
20	38

adult size	neck
S	14.5
M	15.5
L	16.5
XL	17.5
2XL	18.5

Knit Shirts

youth size	chest
2XS	25
XS	27
S	29
M	32
L	36
XL	38

adult size	chest
S	38
M	42
L	46
XL	50
2XL	54
3XL	58

MEASUREMENTS

Measurements on chart are body measurements

chest/bust:	measure the fullest part
waist:	measure at the traditional waist, the narrowest part of the waist—all styles are sized based on this measurement.
hips:	stand heels together; measure fullest part
rise:	measure bottom of waistband at the back around crotch to bottom of waistband front
waist length:	measure from nape of neck to waist
inseam:	measure from crotch to top of shoe
skirt length:	measure from bottom of waistband

SPECIAL SIZES require these measurements

jumpers:	bust/ waist/ hip/ skirt length/ waist length
skirts/skorts:	waist/ hip/ skirt length
pants:	waist/ hip/ inseam
walk shorts:	waist/ hip/ walk short length

update 11/07

2011/2012 Order Form
ST. HENRY SCHOOL
 Nashville, TN

School Code: **NVSHNT**

parent/guardian _____
 (First Name) (Last Name)

daytime phone (____) _____ email address: _____

address _____
 (Street) (City) (State) (Zip)

qty	item#	color/description	size	price	total
2	SAMPLE ONLY - 040600-965	Boys Walk Shorts, Navy Anchor Twill (069)	Prep 32	\$21.50	\$43.00

postage and handling:	
<u>order sub-total</u>	<u>Add</u>
Up to \$25	\$6.95
\$25.01 to \$100	\$8.95
\$100.01 and up	\$11.95
Shipments to Canada	\$25.00

order sub-total	
sales tax % 0.0925	
postage/handling	
TOTAL	

All orders payable in US Dollars only.

VISA Mastercard Discover check money order DENNIScrip gift certificate

Account Number
 _____ - _____ - _____ - _____

Sorry, we cannot make change on mail orders paid with DENNIScrip or dennis gift certificates. (Please record the serial numbers for your records).

Expiration Date Mo____/Yr____

Signature _____

Mail Order: Portland Mail Order, 714 NE Hancock, Portland, OR 97212
Order online: www.dennisuniform.com
National Customer Service: (800) 854-6951 **FAX:** (877) 291-5480
Hours: M-F 8am-5pm PST